

# University of North Carolina Wilmington



## Five Years of Progress

2003 – 2008

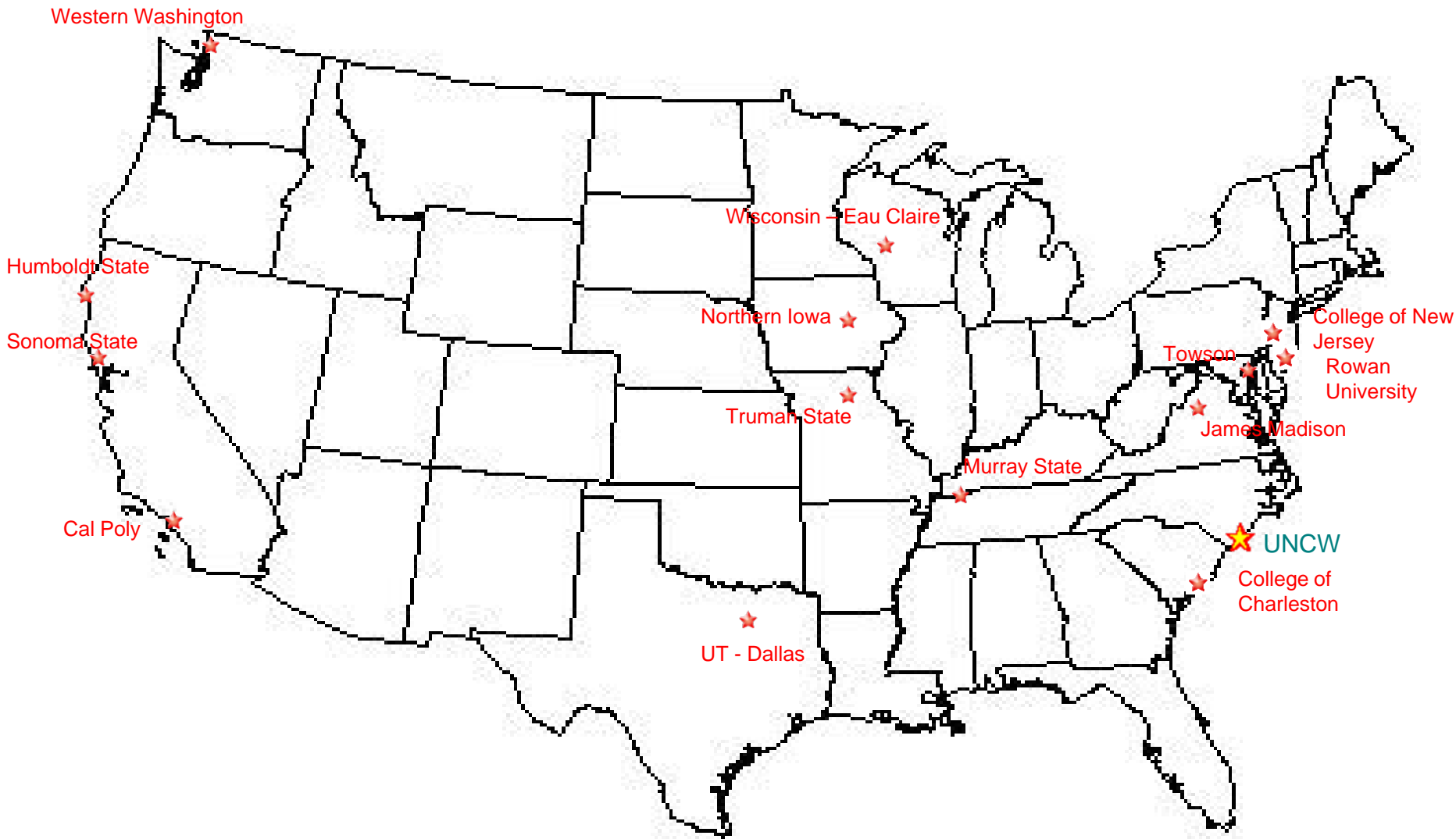
[www.uncw.edu/planning/benchmarks.htm](http://www.uncw.edu/planning/benchmarks.htm)

# Peer Institutions

Approved by the UNC Board of Governors February 2006

- Cal Poly – San Luis Obispo
- College Of Charleston
- College of New Jersey
- Humboldt State
- James Madison
- Murray State
- Northern Iowa
- Rowan
- Sonoma State
- Towson
- Truman State
- UT – Dallas
- Wisconsin – Eau Claire
- Western Washington

# Geographic location of UNCW's peers



# The Top Public Universities—Master's

NORTH	SOUTH	MIDWEST	WEST
<ul style="list-style-type: none"> <li>1. College of New Jersey</li> <li>2. SUNY Col. Arts &amp; Sci.—Geneseo</li> <li>3. Rutgers, the State University of New Jersey—Camden</li> <li>4. Rowan University (NJ)</li> <li>5. Ramapo College of New Jersey</li> <li>6. CUNY—Baruch College</li> <li>7. Salisbury University (MD)</li> <li>7. SUNY Col. Arts &amp; Sci.—New Paltz</li> <li>9. Millersville U. of Pennsylvania</li> <li>9. Montclair State University (NJ)</li> <li>9. Towson University (MD)</li> <li>12. CUNY—Hunter College</li> <li>12. CUNY—Queens College</li> <li>12. SUNY—Fredonia</li> <li>12. U. of Massachusetts—Dartmouth</li> </ul>	<ul style="list-style-type: none"> <li>1. James Madison University (VA)</li> <li>2. The Citadel (SC)</li> <li>3. College of Charleston (SC)</li> <li>4. Univ. of Mary Washington (VA)</li> <li>5. Appalachian State Univ. (NC)</li> <li>6. Murray State University (KY)</li> <li>6. U. of N.C.—Wilmington</li> <li>8. Tennessee Technological Univ.</li> <li>8. Winthrop University (SC)</li> <li>10. Mississippi Univ. for Women</li> <li>11. Longwood University (VA)</li> <li>12. Western Kentucky University</li> <li>13. U. of Tennessee—Chattanooga</li> <li>14. Marshall University (WV)</li> <li>15. Georgia College and State U.</li> <li>15. Radford University (VA)</li> </ul>	<ul style="list-style-type: none"> <li>1. Truman State University (MO)</li> <li>2. University of Northern Iowa</li> <li>3. Univ. of Wisconsin—La Crosse</li> <li>4. Univ. of Michigan—Dearborn</li> <li>5. Univ. of Wisconsin—Eau Claire</li> <li>6. Washburn University (KS)</li> <li>7. U. of Wisconsin—Stevens Point</li> <li>8. Grand Valley State Univ. (MI)</li> <li>9. Southern Ill. U.—Edwardsville</li> <li>10. University of Minnesota—Duluth</li> <li>11. Missouri State Univ.</li> <li>11. Univ. of Wisconsin—Whitewater</li> <li>11. Winona State University (MN)</li> <li>14. Eastern Illinois University</li> <li>15. University of Central Missouri</li> <li>15. Univ. of Nebraska—Kearney</li> <li>15. Univ. of Wisconsin—River Falls</li> <li>15. Western Illinois University</li> </ul>	<ul style="list-style-type: none"> <li>1. Cal Poly—San Luis Obispo</li> <li>2. Western Washington University</li> <li>3. N.M. Inst. of Mining and Tech.</li> <li>4. Evergreen State College (WA)</li> <li>5. California State U.—Long Beach</li> <li>6. Calif. State Poly. U.—Pomona</li> <li>6. California State Univ.—Chico</li> <li>8. San Jose State University (CA)</li> <li>9. Sonoma State University (CA)</li> <li>10. California State U.—Fullerton</li> <li>10. U. of Colo.—Colorado Springs</li> <li>12. California State U.—Stanislaus</li> <li>12. Central Washington University</li> <li>12. Eastern Washington University</li> <li>12. Texas State Univ.—San Marcos</li> <li>16. Humboldt State University (CA)</li> </ul>

 Denotes UNCW peer

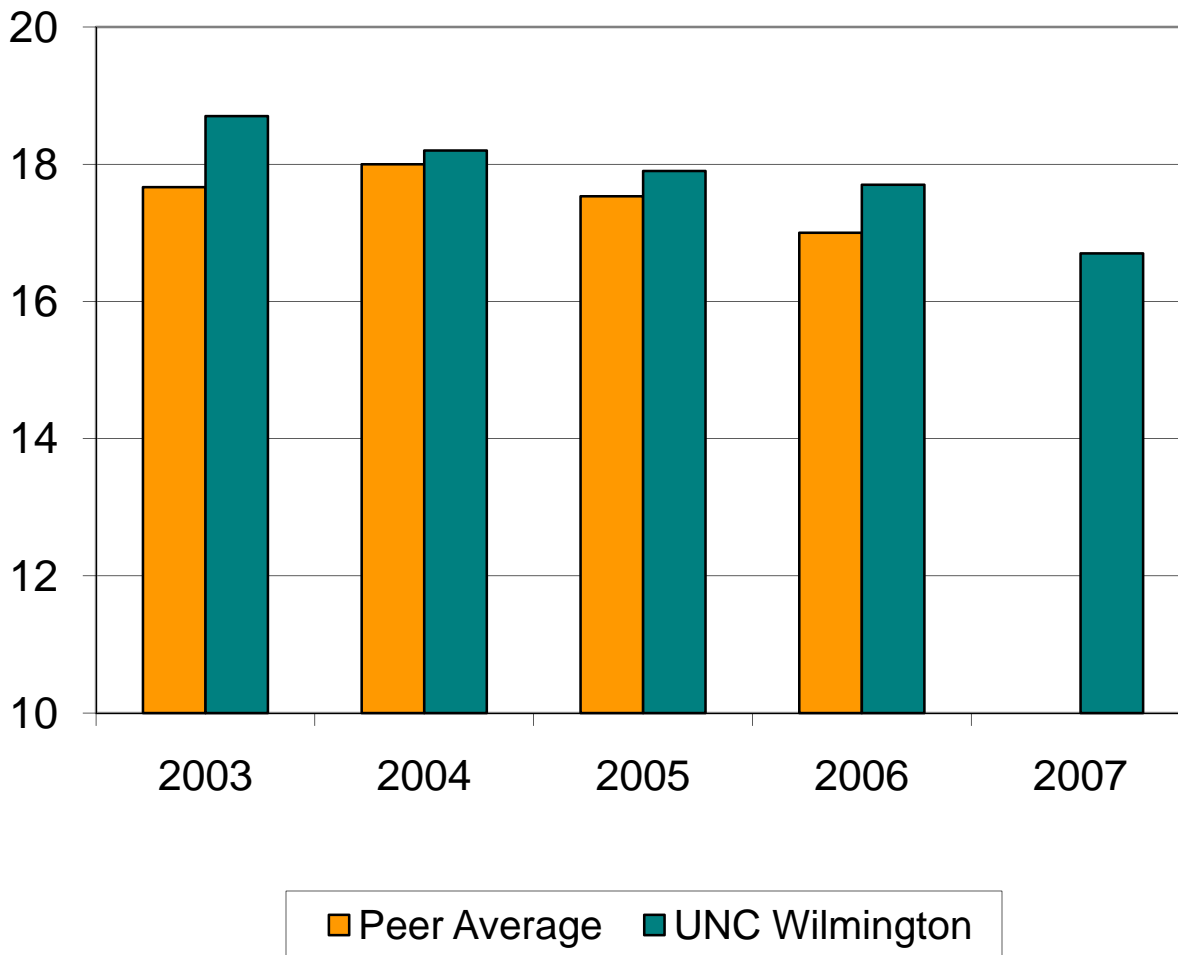
## ***Progress Measure 1***

**Improve the student-faculty ratio from 18.2 to 1 in 2004-05 to 17.2 to 1 by 2007, with a long term target of 16 to 1.**



# Student-Faculty Ratio Trend

(Data from US News and World Report)



Fall 2003  
student-  
faculty  
ratio:  
18.7 to 1

Fall 2007  
student-  
faculty  
ratio:  
16.7 to 1

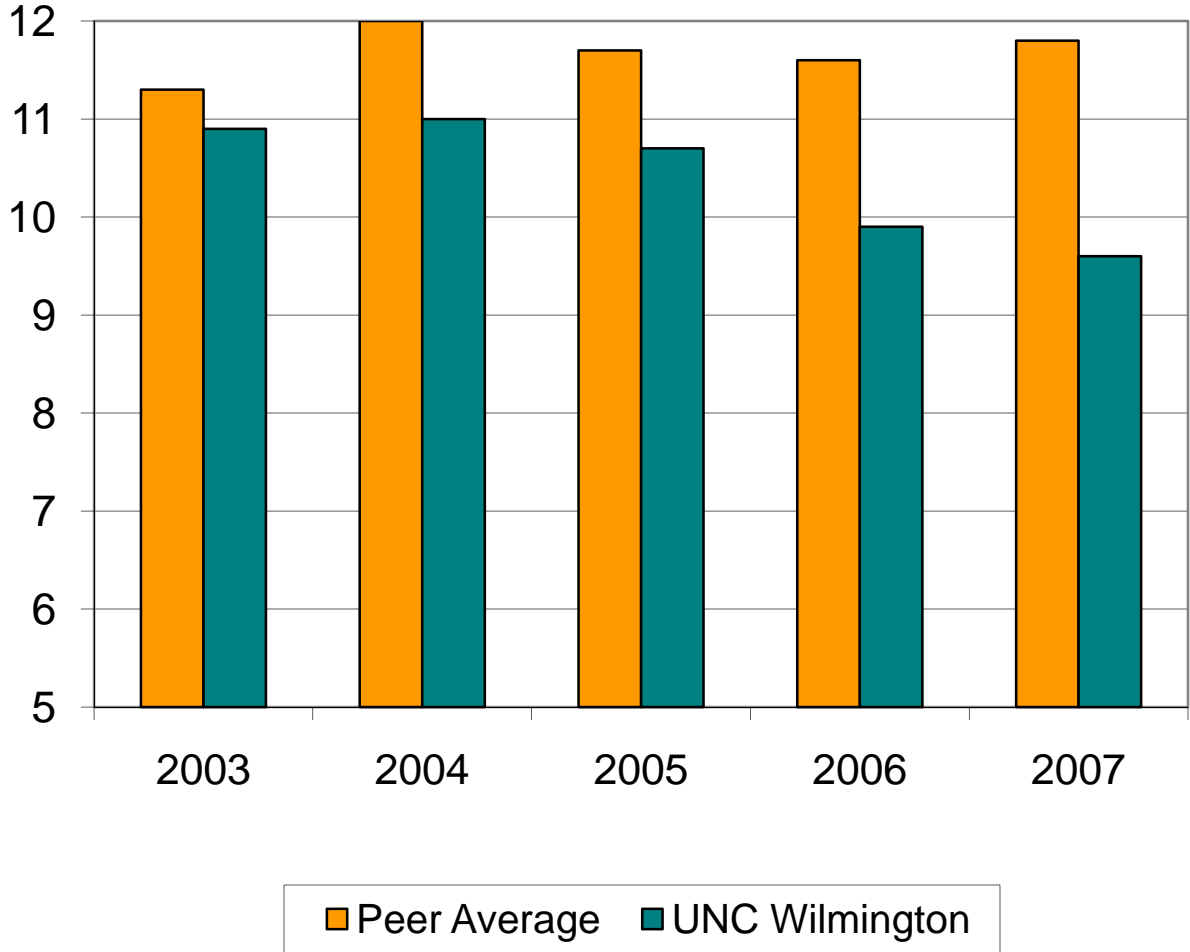
## ***Progress Measure 2***

**Improve the student-staff ratio from 10.9 to 1 in 2003-04 to 10.0 to 1 by 2010.**



# Student-Staff Ratio Trend

(Data from IPEDS)



Fall 2003  
student-  
staff ratio:  
10.9 to 1

Fall 2007  
student-  
staff ratio:  
9.6 to 1

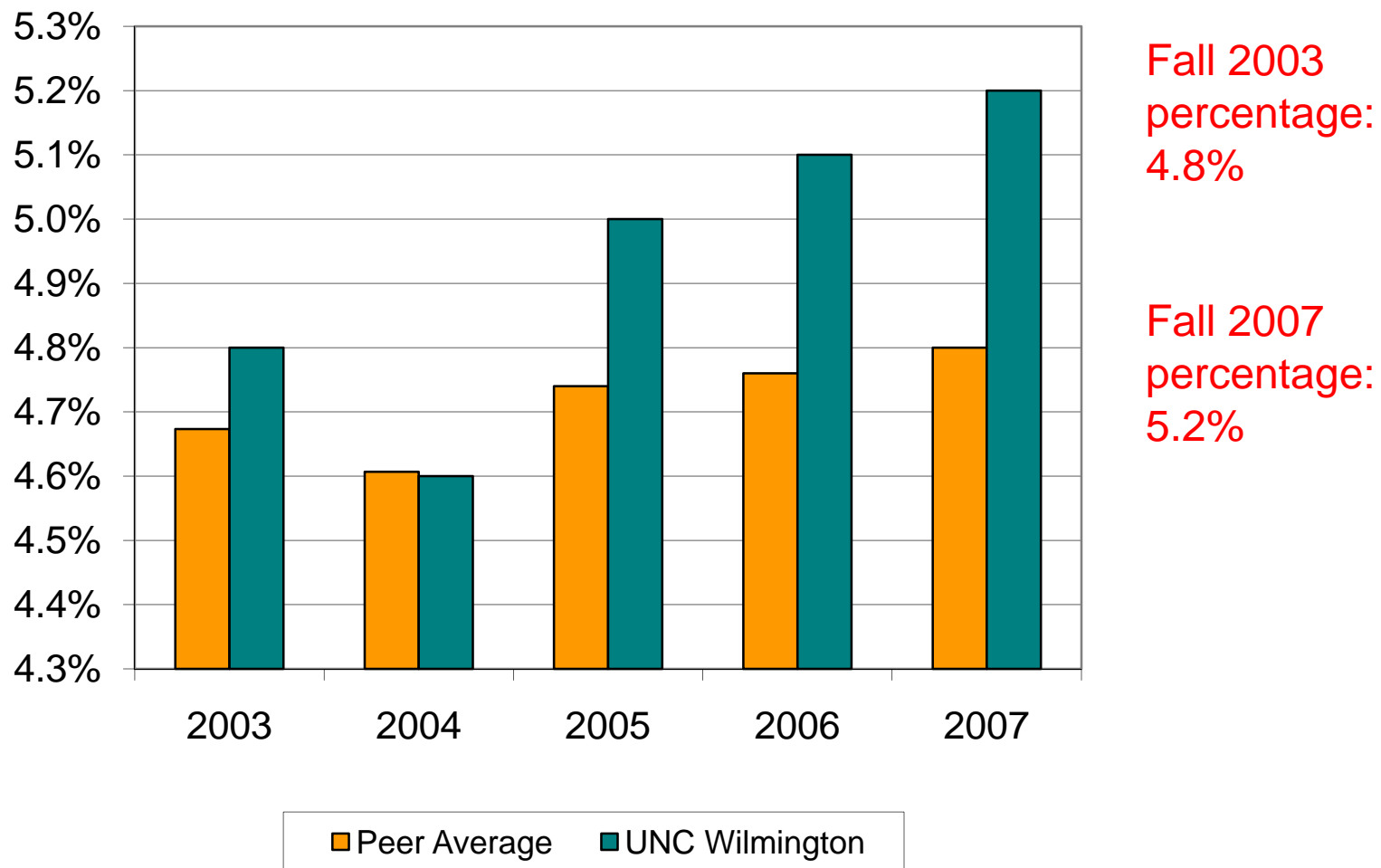
## ***Progress Measure 3***

**...increase the proportion of student enrollments from historically underrepresented groups to achieve a critical mass necessary to enrich the education of all UNCW students.**



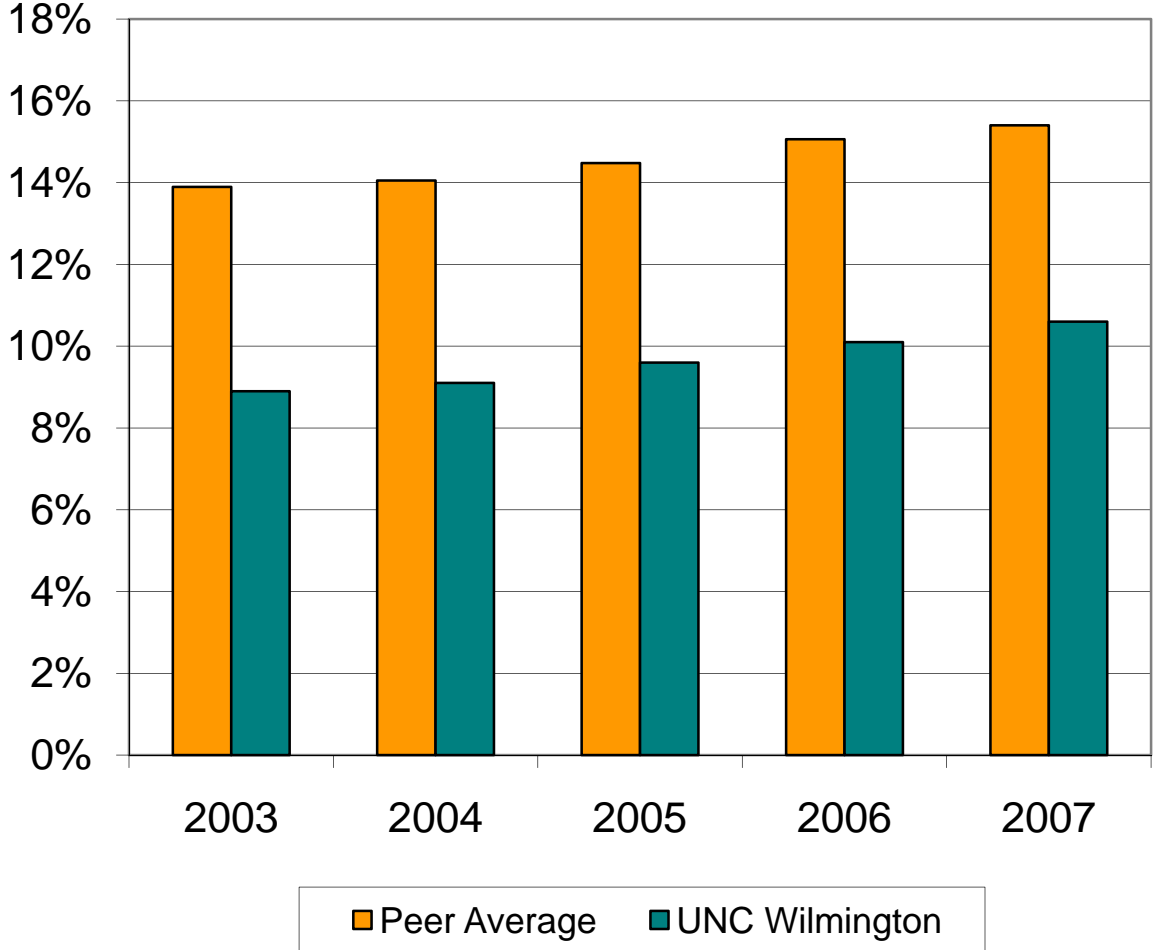
# Black, Non-Hispanic Students as a Percentage of Total Enrolled

(Data from IPEDS)



# Minority Students as a Percentage of Total Enrolled

(Data from IPEDS)



Fall 2003  
percentage:  
8.9%

Fall 2007  
percentage:  
10.6%

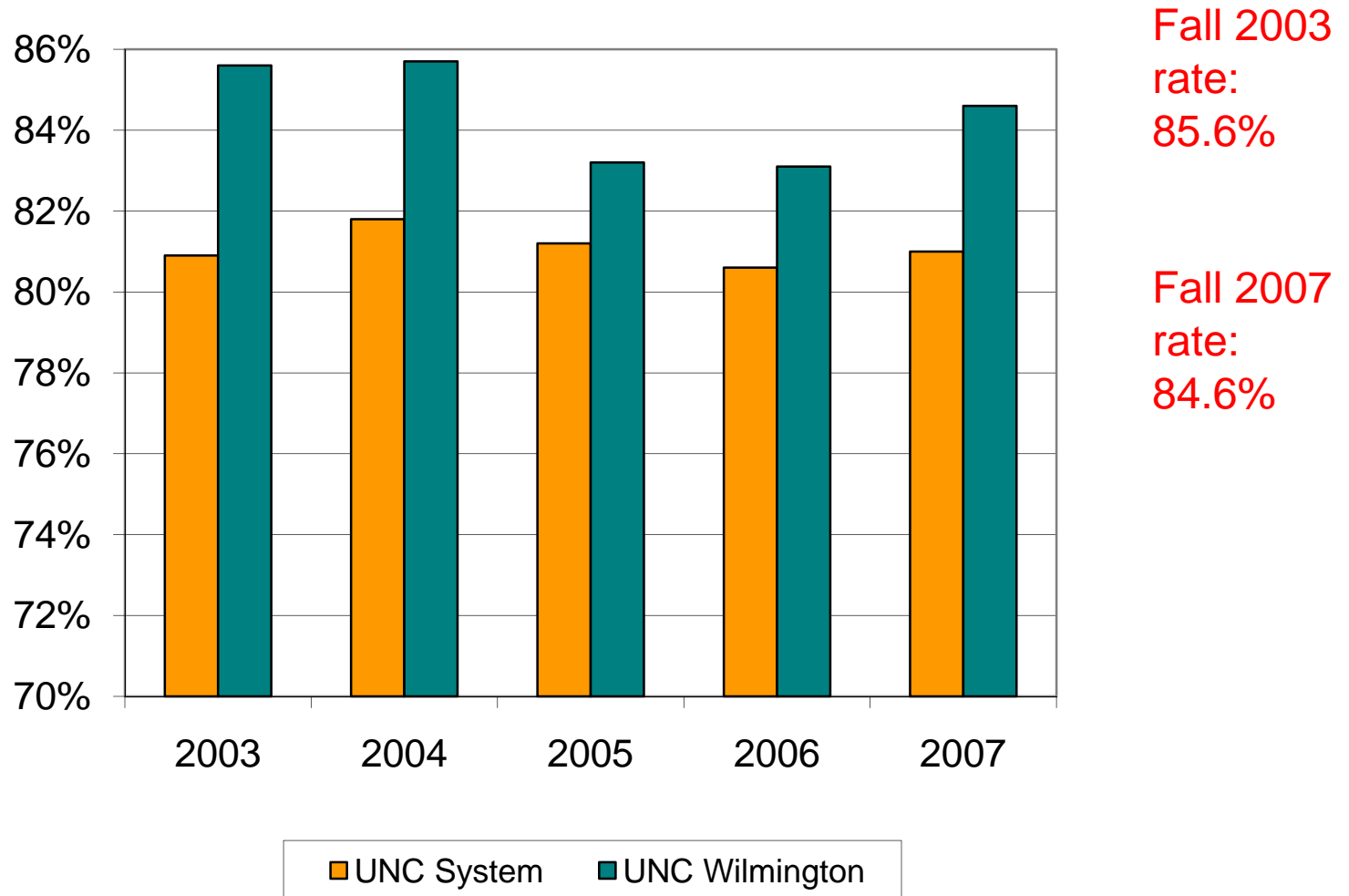
## *Progress Measure 4*

**Increase the freshman to sophomore retention rate from 85.7% in 2004-05 to 90% by 2011, the four-year graduation rate from 42.8% in 2004-05 to 50% by 2012, and the six-year graduation rate from 61% in 2004-05 to 70% by 2012 and to 75% by 2017.**



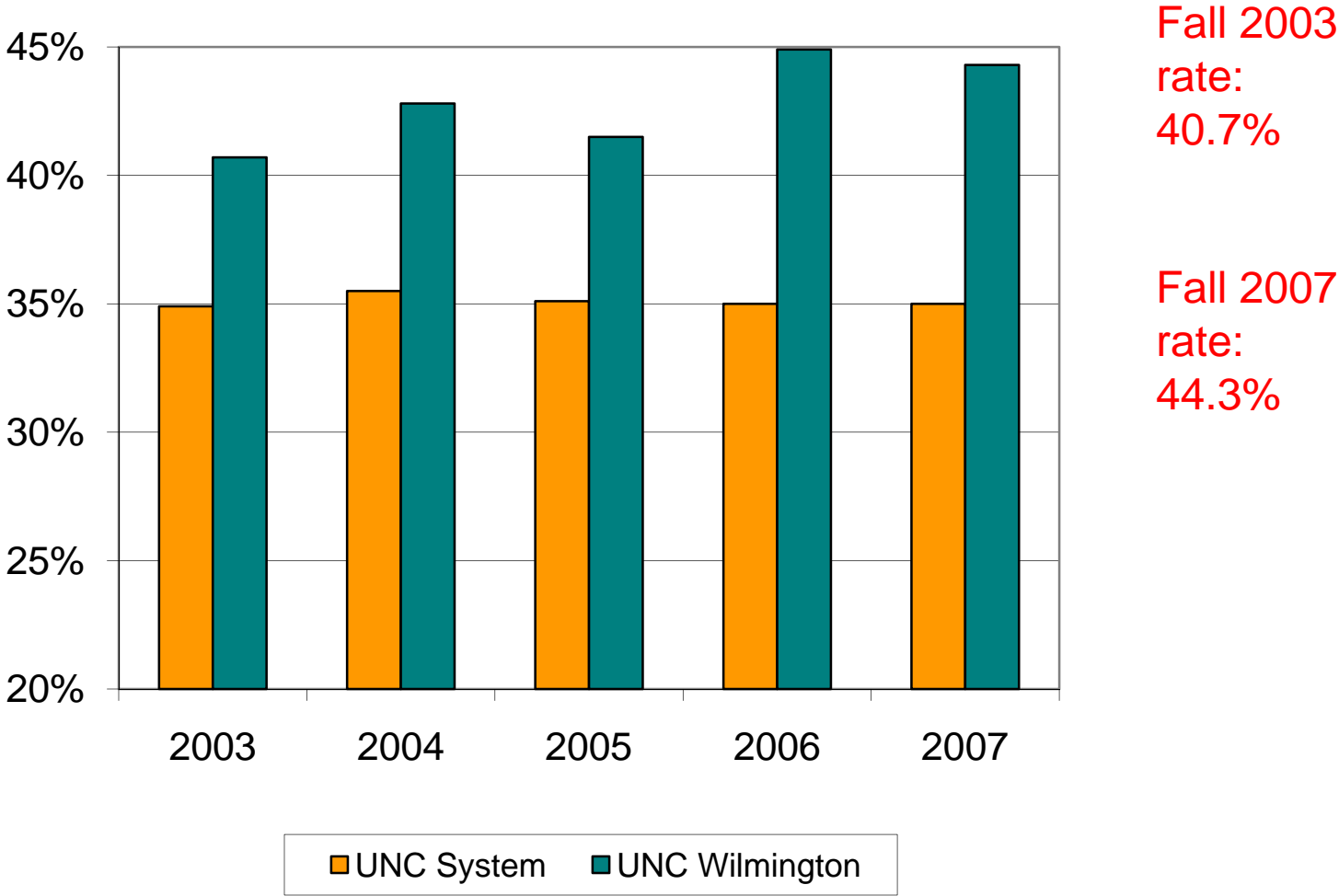
# Freshman Retention Rate

(Data from UNC System Web site)



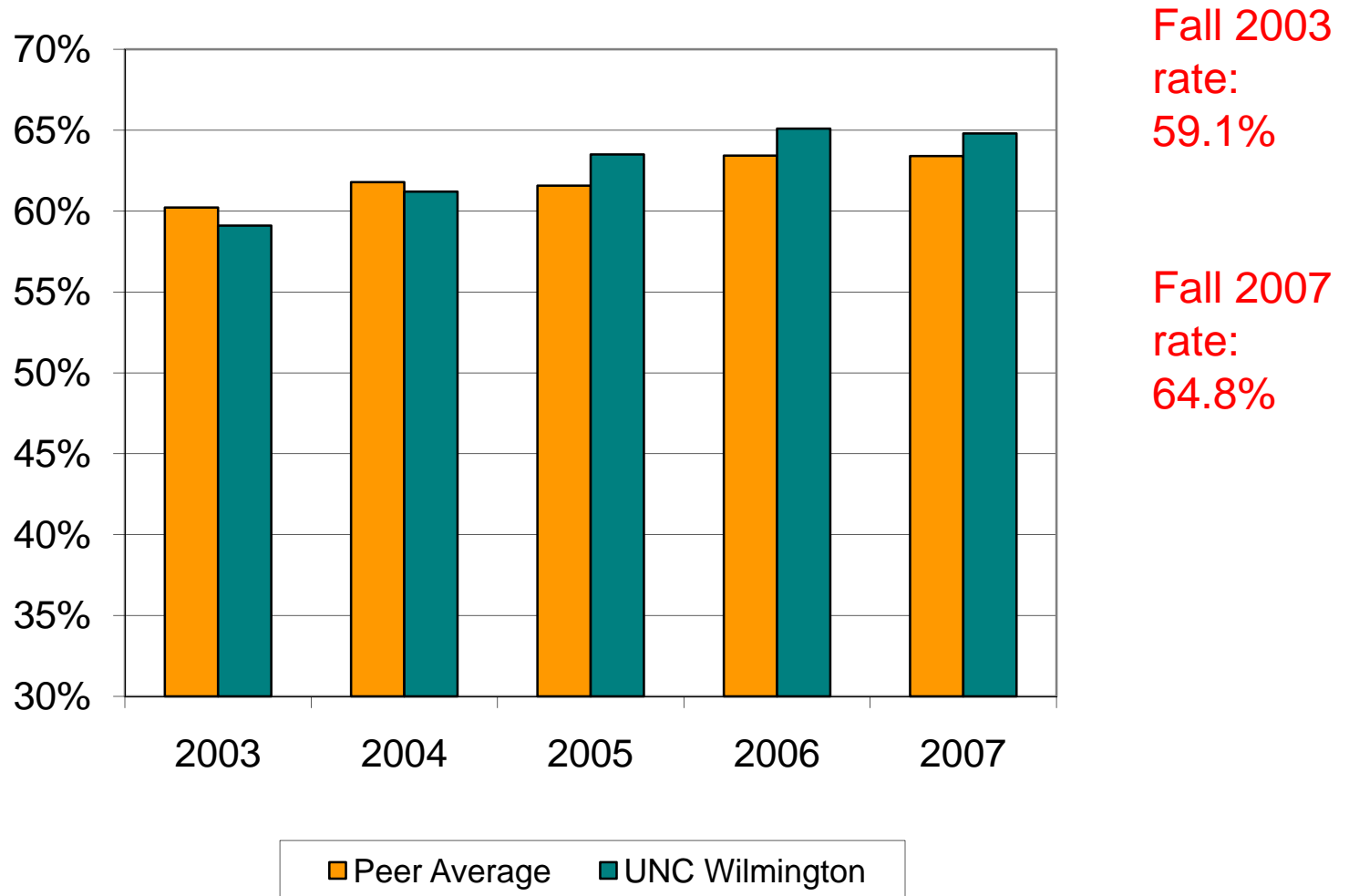
# Four-Year Graduation Rate

(Data from UNC System Web site)



# Six-Year Graduation Rate

(Data from IPEDS)



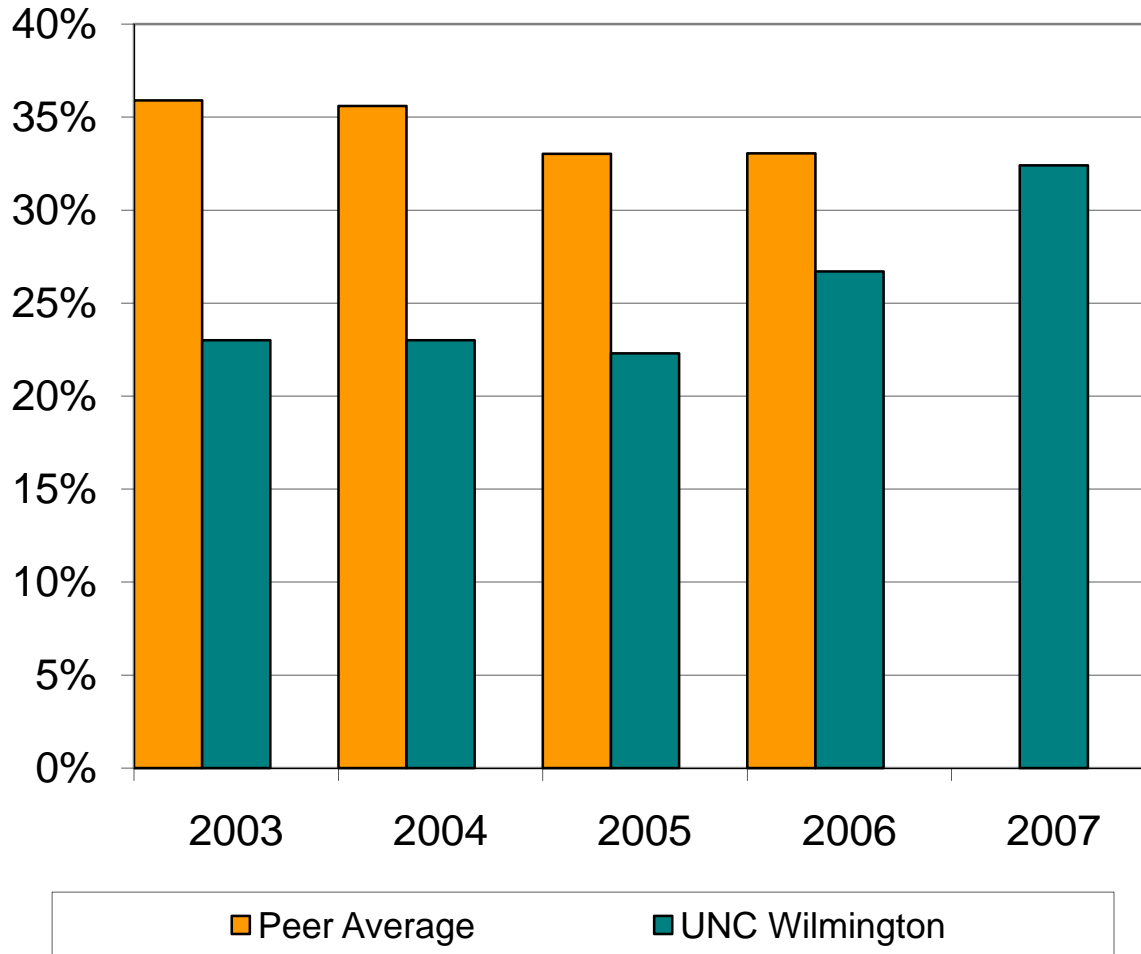
## ***Progress Measure 5***

**Increase the percentage of undergraduates housed on campus from 23.1% in 2004-05 to 35% by 2009, with a long term target of 40%.**



# Percentage of Undergraduates Housed on Campus

(Data from US News and World Report)



Fall 2003  
percentage:  
23%

Fall 2007  
percentage:  
32.4%

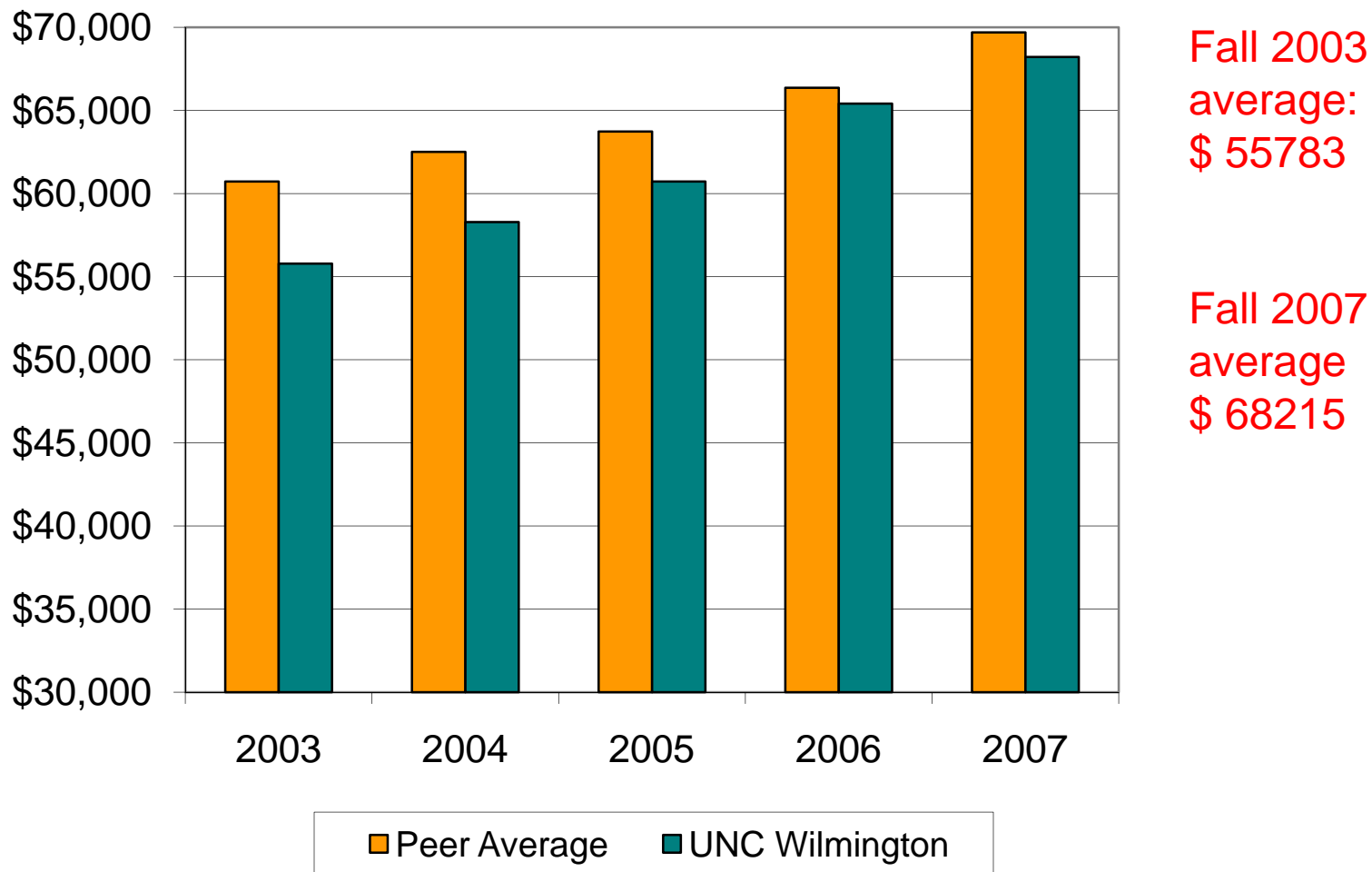
## ***Progress Measure 6***

**...steadily increase average faculty salaries to the peer group 80th percentile for each rank...**



# Average Faculty Salary

(Average salary of full time instructional faculty on 9 or 10 month contracts.  
Data from IPEDS)



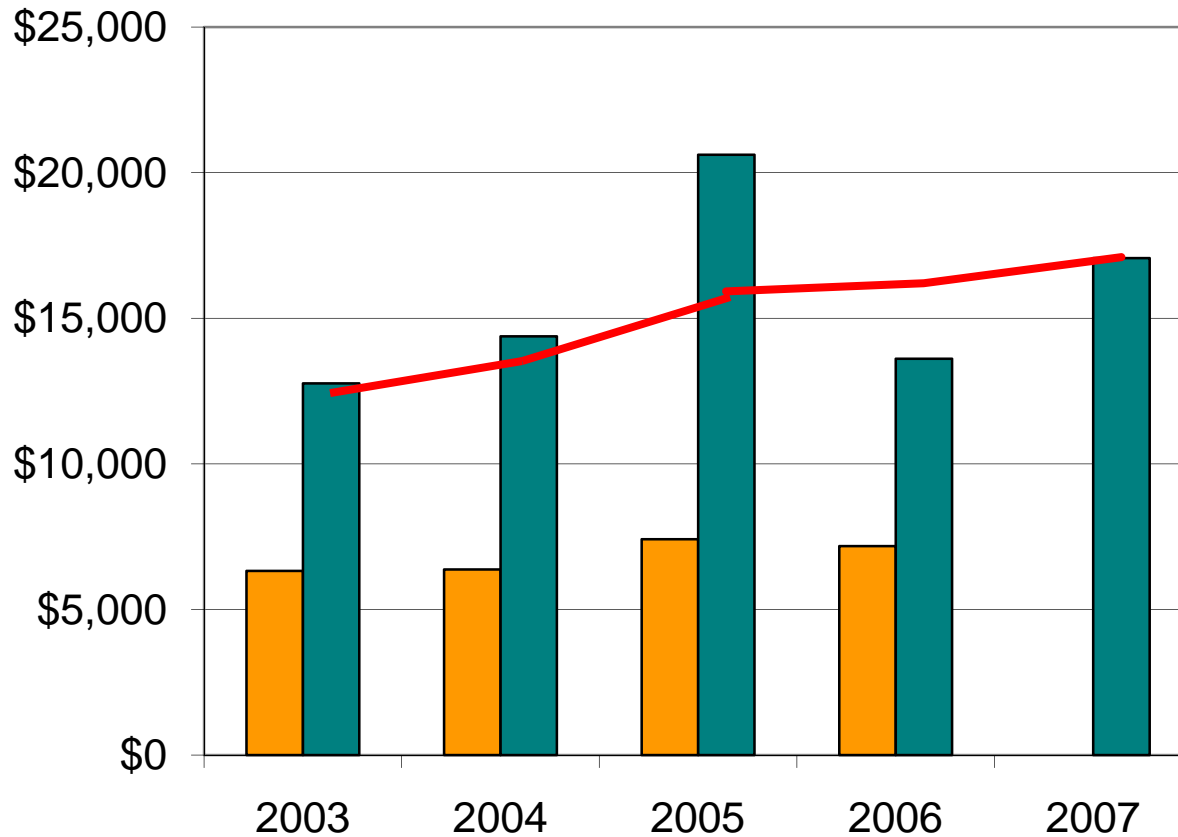
## ***Progress Measure 7***

**Increase the three-year moving average of total annual R&D expenditures from \$12.5 million in 2001-03 to at least \$20 million by 2009-11.**



# Total R&D Expenditures

(Dollar amounts in thousands. FY data from NSF WebCASPAR)



FY 2003:  
\$12.8  
million

FY2007:  
\$17.1  
million

Peer Average    UNC Wilmington    3-Year Moving Avg.

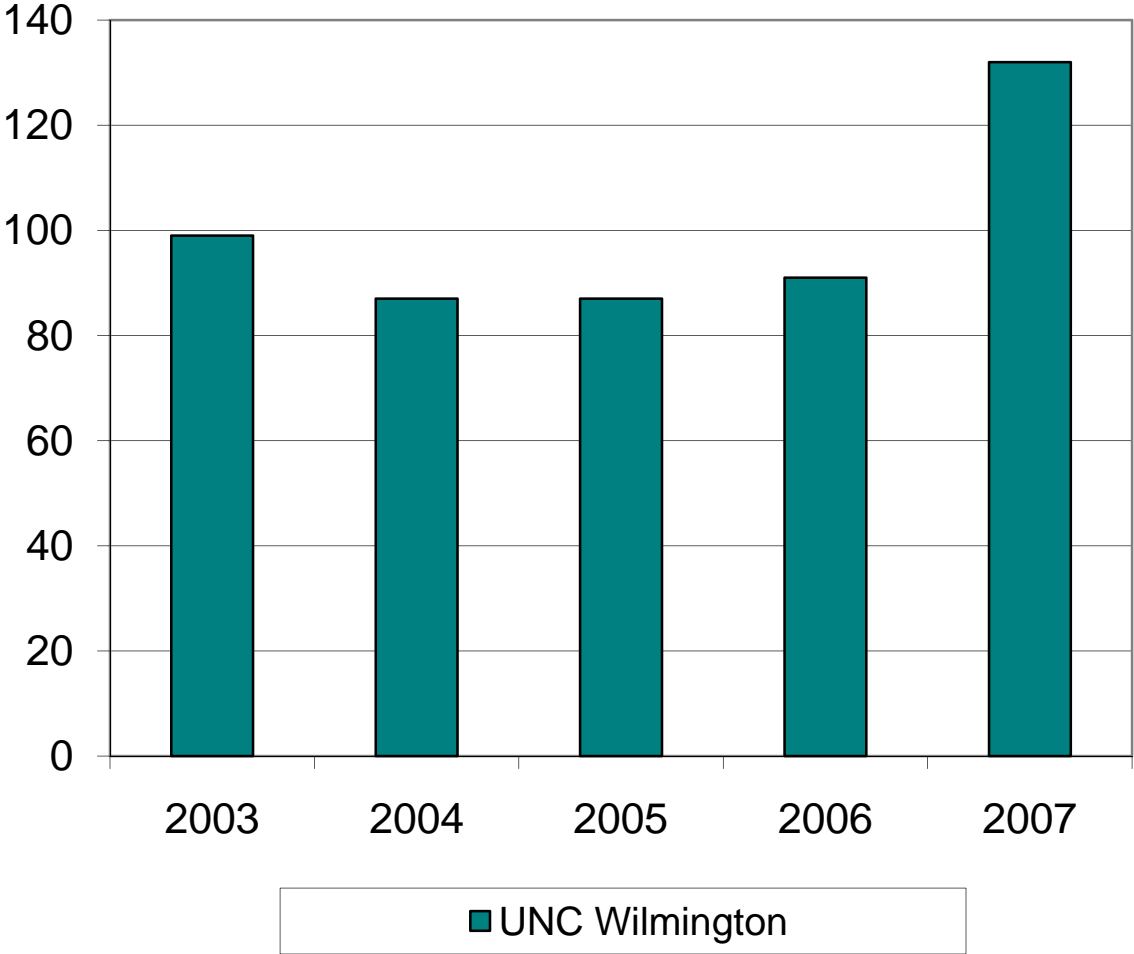
## ***Progress Measure 8***

**By fall 2010, increase the international student population to 3% of the total student population. Increase the study abroad participation rate to 20% of undergraduates completing UNCW degrees by 2010, and to 25% by 2015.**



# International Student Enrollment

(Data from UNCW Office of International Programs)

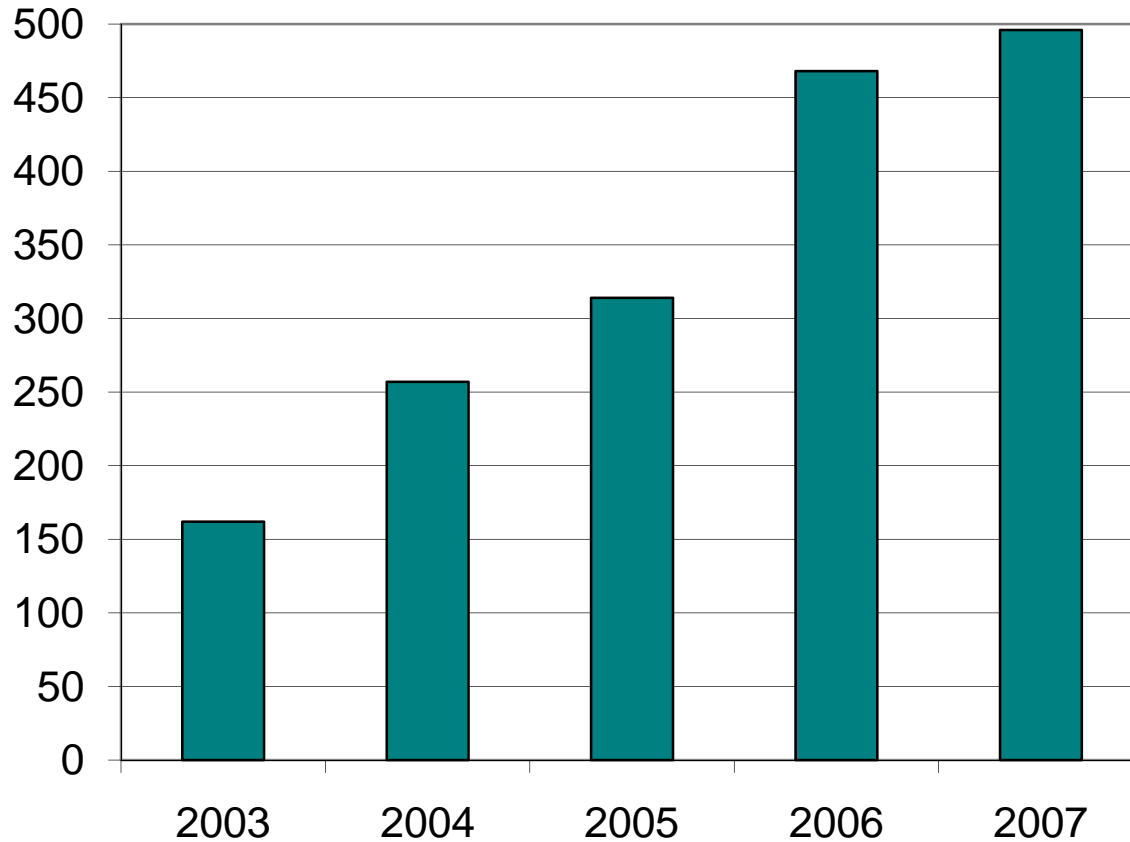


2003-04 intl.  
enrollment:  
99

2007-08 intl.  
enrollment:  
132

# Undergraduate Study Abroad Participation

(Data from UNCW Office of International Programs)



2003-04  
participants:  
162

2007-08  
participants:  
496

■ UNC Wilmington

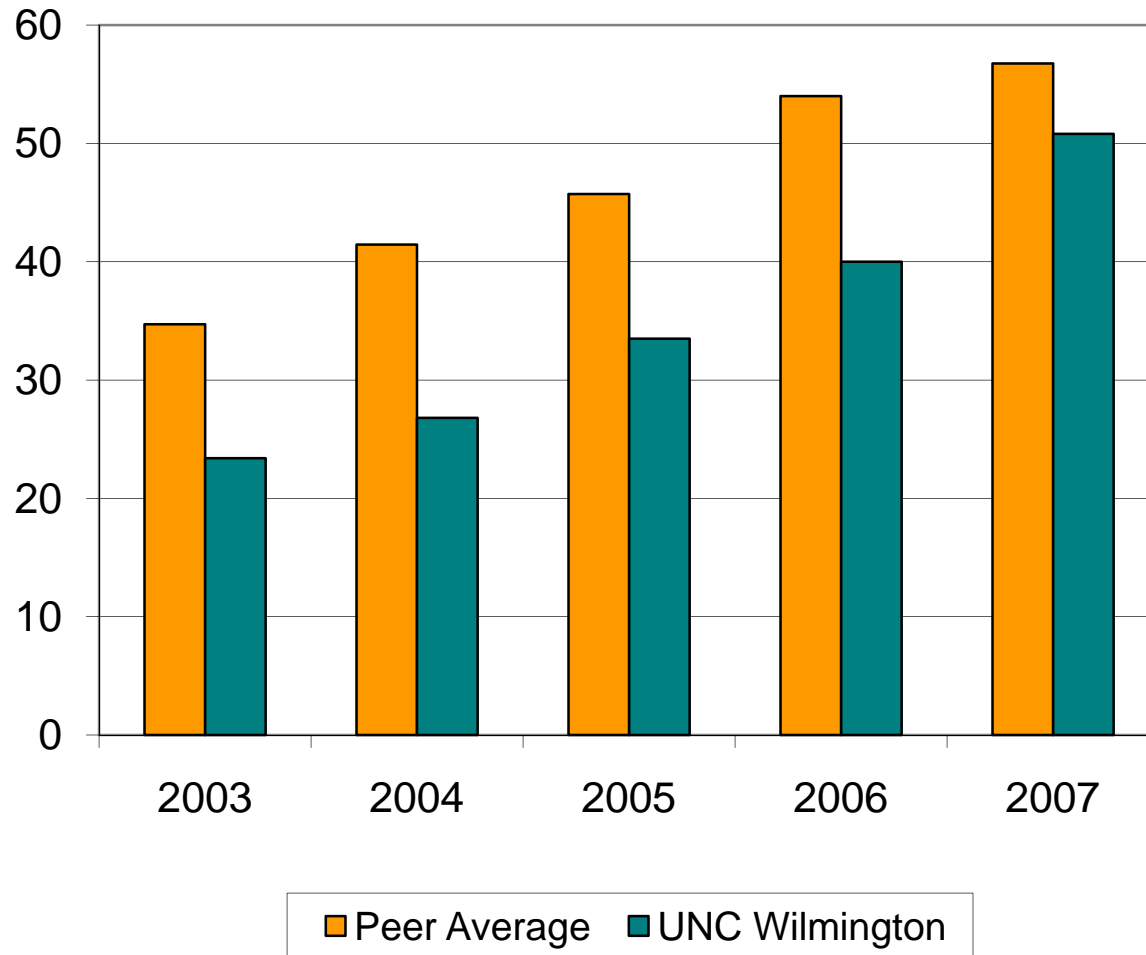
## ***Progress Measure 9***

**Raise significant additional endowment for diversity and merit scholarships, with a campaign to be completed by 2013.**



# Endowment Value (\$ millions)

(End of Fiscal Year Market Value. Data from CAE)

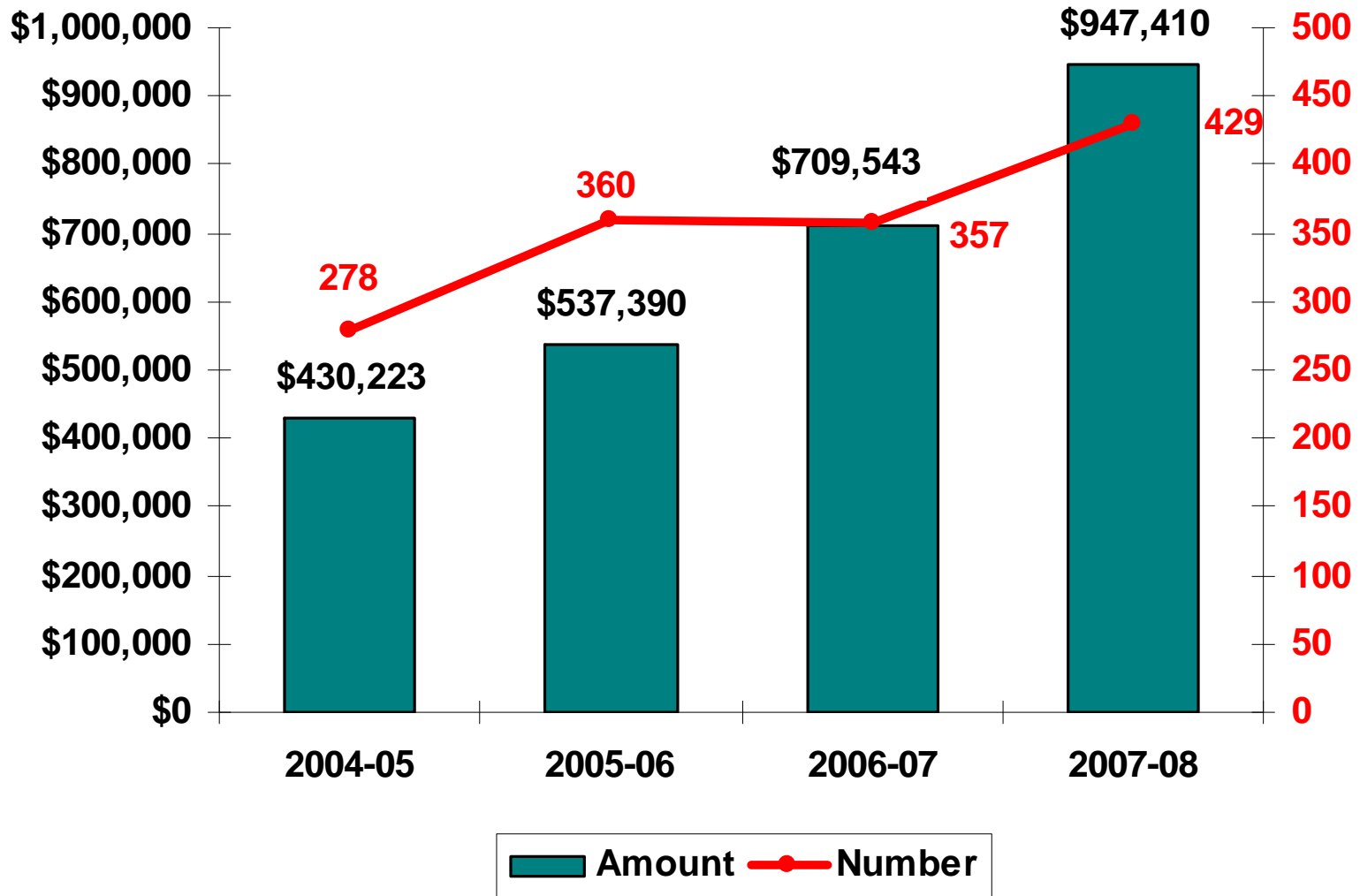


FY 2003  
endowment:  
\$23.4 million

FY 2007  
endowment:  
\$50.8 million

# Total Non-Need Based (Merit) Aid Awarded to UNCW Undergraduates from Endowment Funds

(Excludes athletic awards. Data from UNCW Financial Aid Office)



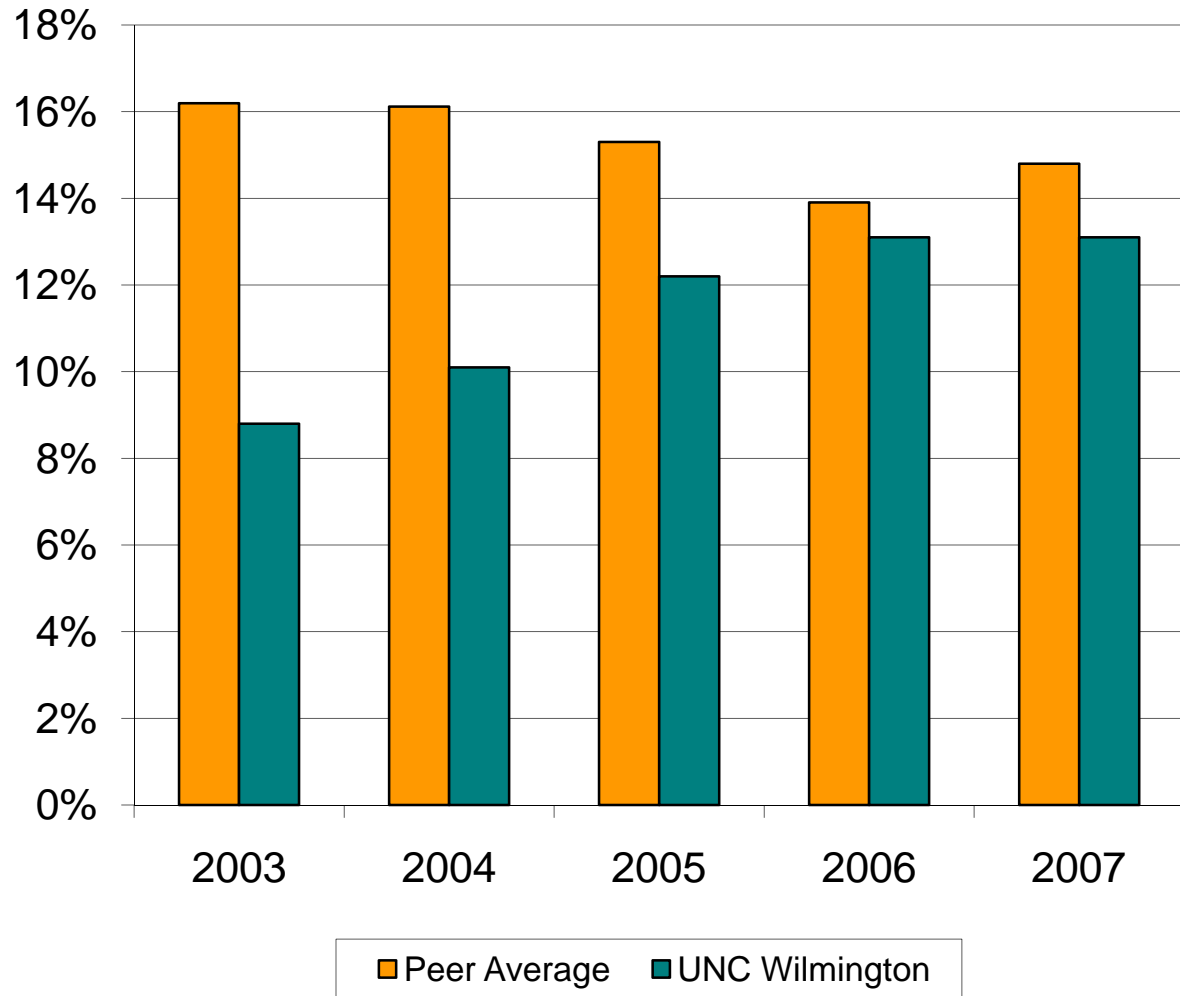
## ***Progress Measure 10***

**Increase the alumni giving rate to at least 16% by FY 2008, and to a level in excess of 16% by FY 2010.**



# Alumni Giving (Donors as a % of Solicited)

(Data from CAE)



FY 2003  
rate:  
8.8%

FY 2007  
rate:  
13.1%

## Additional Five-Year Changes

	<b>2003-04</b>	<b>2007-08</b>	<b>Percent change</b>
<b>Total enrollment</b>	11079	12180	9.9%
<b>Total full-time faculty</b>	467	544	16.5%
<b>Total staff (EPA + SPA)</b>	990	1267	28.0%
<b>Total operating expenses</b>	\$ 151.9 M	\$ 230 M	51.4%
<b>US News public rank (Master's South)</b>	6	6 (tie)	
<b>US News overall rank (Master's South)</b>	18 (tie)	14 (tie)	



[www.uncw.edu/planning/benchmarks.htm](http://www.uncw.edu/planning/benchmarks.htm)