

BRUNSWICK COUNTY

Daniels is newest magistrate

By Bill Davis
Special to the *Pilot*

Elton Daniels was sworn last week as Brunswick County's newest magistrate.

The Leland native is currently attending UNC-Wilmington while working toward a master's

degree in public administration. He was a star athlete at North Brunswick High School and received a football scholarship to Furman University.

Senior resident superior court judge Ola Lewis presided over the swearing-in ceremony, which was attended by Daniels' fam-

ily, pastor and a professor from UNC-Wilmington.

"I want to thank all the people in this room for preparing me for this milestone in my life," said Daniels. "You all know what you have done to help me become the person that I am, and I am grateful to each of you. I am looking forward to the challenge of the job so I can become the best magistrate that I can."

Daniels is on target to complete his master's degree in May, 2009. It is a college program geared toward working candidates.

He has been on the job for two weeks, and after a brief training period hopes to be assigned to the Leland magistrate's office. Training includes attending a magistrate program at UNC-Chapel Hill.

"I wanted to find a job in Brunswick County and start my career helping people," said Daniels. "I am excited to have this opportunity and will give the job my best effort."

Magistrates are frequently the first person in the judicial system that an alleged wrongdoer or victim meets. In criminal cases, they can issue arrest warrants and initially set bond amounts. They are supervised by the chief district court judge.

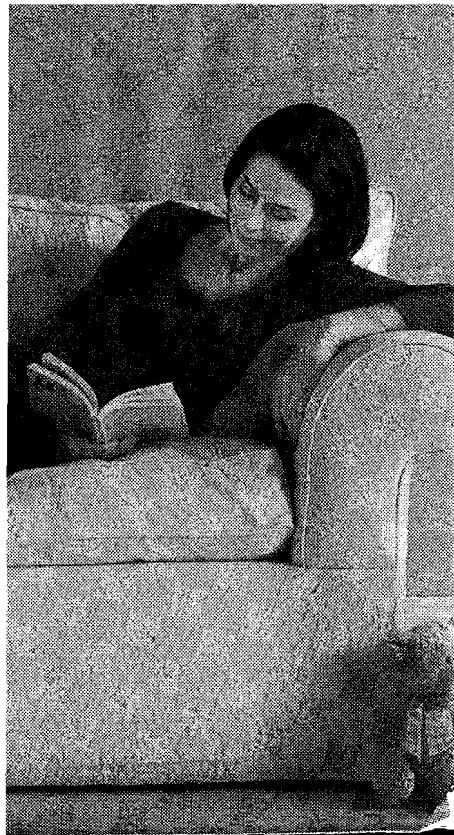
Joining Daniels at his swearing-in ceremony last week were family members along with Angela Douglas, one of his UNC-W

professors in the public administration program. Two aunts, who are both principals in the Brunswick County school system, also attended along with his pastor, the Rev. Ronald Williams of Hooper's Chapel Missionary Baptist Church.



Photo by Bill Davis

Elton Daniels, Brunswick County's newest magistrate, was sworn to duty last week by senior resident superior court judge Ola Lewis. After training, the Leland native hopes to be assigned to the Leland magistrate's office.



WIL
(91)

474
SHA
rust

ms
NINO

1-092

Important
on amount
qualificati
value for
Allstate in

nsu
clea